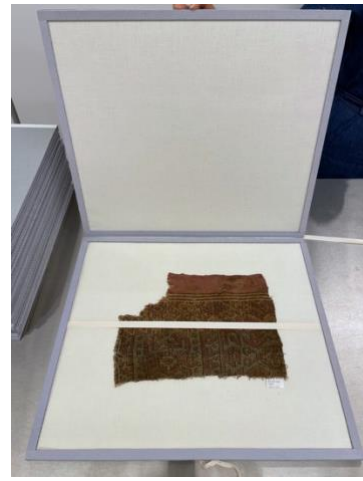


**FIT Graduate Study Collection: Fashion and Textile Studies**  
***Instructions - Textile Fragment Study Mount***



Standard Mount Sizes:

- **Large:** 23" x 17" (fragments no larger than 55 cm x 43 cm)
- **Medium:** 15" x 11" (fragments no larger than 38 cm x 27 cm)
- **Small:** 11" x 9" (fragments no larger than 25 cm x 20 cm)

Materials:

- Single-walled archival corrugated board (blueboard)
- Thin polyester needle felt (no thicker than the height of the blueboard)
- Washed muslin
- ½" wide will tape
- 4 cm wide Filmoplast or Tyvek tape
- Hot melt glue

Instructions:

1. Choose a standard mount size based on the maximum dimensions of the textile fragment. Cut two boards to that size out of single-walled archival corrugated board (blueboard) as shown in figure 1. For example, if you are making a standard large mount, cut two 23" x 17" boards.
2. Cut eight ½" wide strips for the interior bumpers of the mount as shown in figure 2 (four for top of mount and four for bottom). Cut to these standard sizes:  
Large: (cut 4) ½" x 17", (cut 4) ½" x 22"  
Medium: (cut 4) ½" x 11", (cut 4) ½" x 14"  
Small: (cut 4) ½" x 9", (cut 4) ½" x 10"  
Ensure that the cut bumpers meet at the corners when placed along edges of the board as shown in figure 3.
3. Cut one piece of thin polyester needle felt to one inch shorter than the dimensions of the board so that there is a ½" gutter along all four edges when placed on top of the board as shown in figure 4.

4. Cut/tear one piece of washed cotton muslin to the dimensions of the board. Align the muslin on grain to one of the long sides of the board and secure the muslin to the board along that edge with small dots of hot melt glue, starting in the center and moving towards the edges as shown in figure 5. No more than 5 dots of glue are necessary.
5. Flip the muslin up and place the cut felt piece along that glued edge as shown in figure 6. Secure the felt to the board along that top edge with 1-3 dots of hot melt glue before folding the muslin back overtop the board.
6. Slightly stretch the muslin across the felt-covered board directly across from its already adhered edge. Secure with equal amounts of hot melt glue dots on the opposite edge, starting in the center and moving towards the corners and maintaining the grain of the muslin. There will be excess fabric to trim after stretched and adhered. Once both long edges are secured, secure the short edges in the same manner (stretching should not be necessary but ensure that there is not excess). The now-padded board should look like figure 7.
7. Using 5-10 dots or a thin line of hot melt glue, secure the bumpers to the edges of the padded board overtop the adhered muslin as shown in figure 8.
8. Repeat steps 3-7 to create the other side of the mount using the other precut board and bumpers.
9. To adhere the exterior hinge, cut a strip of 4 cm wide Filmoplast or Tyvek tape slightly longer than the longest edge of the mount. Stack the two mount pieces one on top of the other with the padded sides to the interior and weight them down to hold them perfectly aligned. Float one long edge of the weighted mount over the edge of the table. Secure just  $\frac{1}{4}$ " –  $\frac{3}{8}$ " of the tape along that edge to the top of the mount. Fold the remainder of the tape over the edge of the mount to cover the side, then fold again secure to the bottom edge. Once tape is placed well on top, bottom, and side, use a bone folder over the tape to adhere better and cut off excess tape at the edges. The mount should look like figure 9.
10. To adhere the interior hinge, open the mount flat on the table and cut a 2 cm wide strip of the same Filmoplast or Tyvek tape slightly longer than the hinged edge of the mount. Ensure that the mount pieces are flush. Secure the pieces together by placing the tape on top of the adjacent bumpers as shown in figure 10. Once tape is placed well use a bone folder over the tape to adhere better and cut off excess tape at the edges. Open and close the mount several times to ensure aligned creasing of the hinges.
11. Cut a strip of  $\frac{1}{2}$ " wide twill tape to hold the mount closed as shown in figure 11.
12. Using pencil, label "Top" and "Bottom" on the bottom left side of the mount on both the top and bottom (choose which is top and bottom). Label the bottom righthand corner of both sides of the mount with the study collection number. See figure 12 for diagram of location.

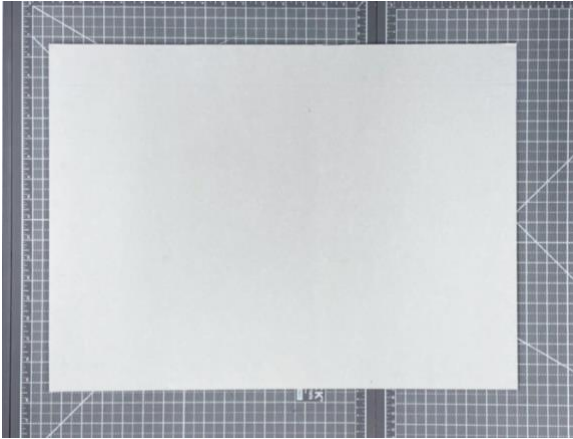


Figure 1.

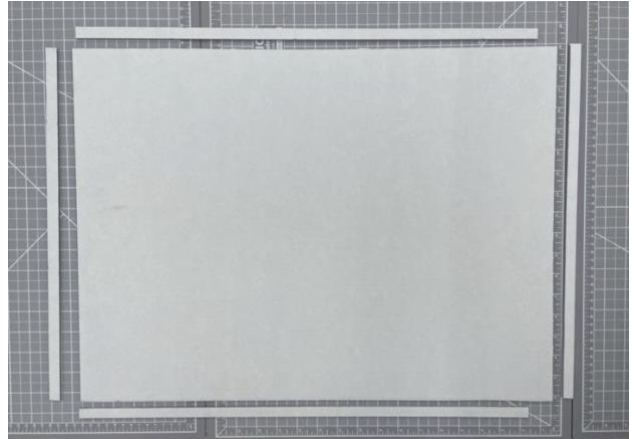


Figure 2.

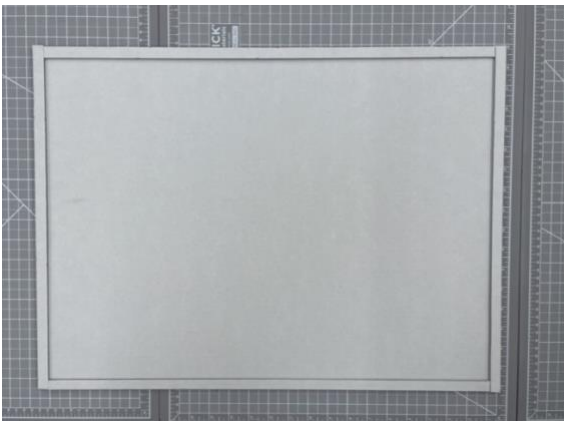


Figure 3.

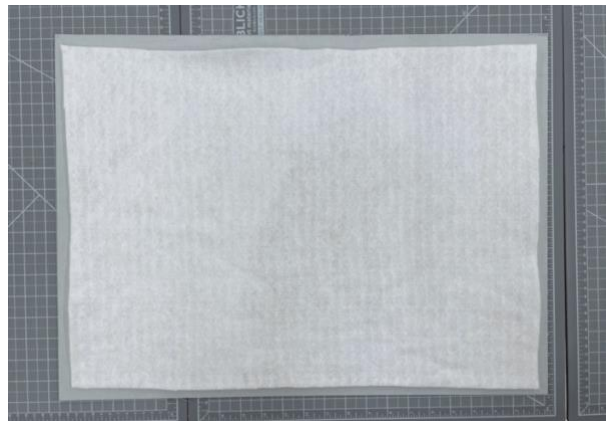


Figure 4.



Figure 5.



Figure 6.

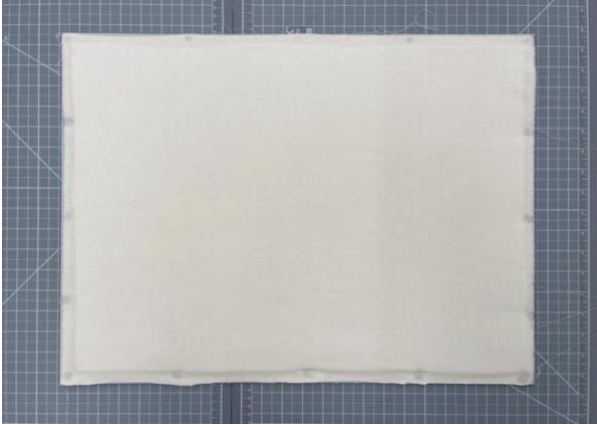


Figure 7.

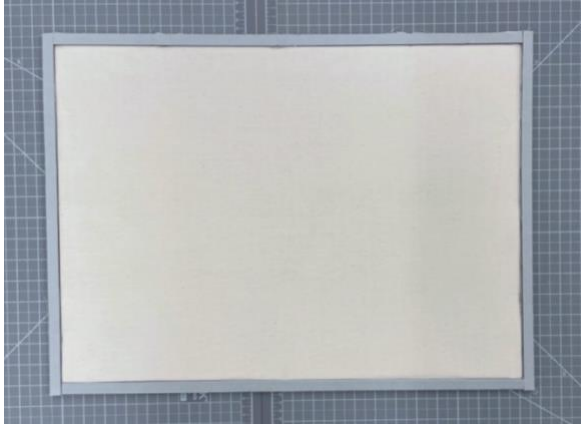


Figure 8.

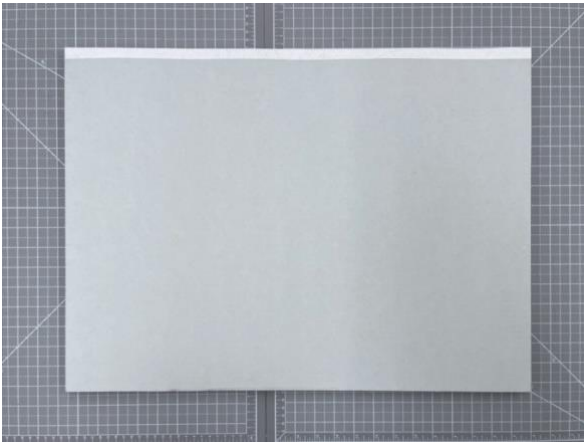


Figure 9.



Figure 10.



Figure 11.



Figure 12.